

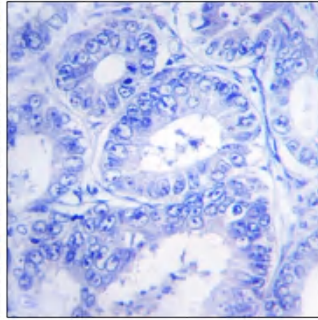
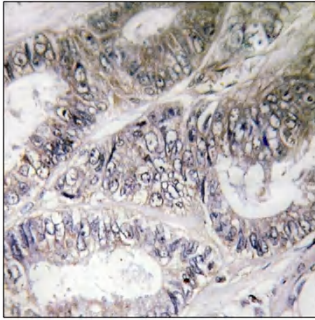


# COX19 Polyclonal Antibody

<b>Catalog No</b>	YP-Ab-02542
<b>Isotype</b>	IgG
<b>Reactivity</b>	Human;Mouse
<b>Applications</b>	IHC;IF;ELISA
<b>Gene Name</b>	COX19
<b>Protein Name</b>	Cytochrome c oxidase assembly protein COX19
<b>Immunogen</b>	The antiserum was produced against synthesized peptide derived from human COX19. AA range:10-59
<b>Specificity</b>	COX19 Polyclonal Antibody detects endogenous levels of COX19 protein.
<b>Formulation</b>	Liquid in PBS containing 50% glycerol, 0.5% BSA and 0.02% sodium azide.
<b>Source</b>	Polyclonal, Rabbit,IgG
<b>Purification</b>	The antibody was affinity-purified from rabbit antiserum by affinity-chromatography using epitope-specific immunogen.
<b>Dilution</b>	IHC: 1/100 - 1/300. ELISA: 1/20000.. IF 1:50-200
<b>Concentration</b>	1 mg/ml
<b>Purity</b>	≥90%
<b>Storage Stability</b>	-20°C/1 year
<b>Synonyms</b>	COX19; Cytochrome c oxidase assembly protein COX19; hCOX19
<b>Observed Band</b>	
<b>Cell Pathway</b>	Cytoplasm, cytosol . Mitochondrion intermembrane space . Mitochondrion . Partitions between mitochondria and the cytosol in a copper-dependent manner. Enriched in the cytosol when intracellular copper concentrations are elevated. .
<b>Tissue Specificity</b>	Ubiquitously expressed. Highly expressed in skeletal muscle.
<b>Function</b>	function:May be required for the assembly of mitochondrial cytochrome c oxidase.,similarity:Belongs to the COX19 family.,similarity:Contains 1 CHCH domain.,tissue specificity:Ubiquitously expressed. Highly expressed in skeletal muscle.,
<b>Background</b>	COX19 encodes a cytochrome c oxidase (COX)-assembly protein. The <i>S. cerevisiae</i> Cox19 protein may play a role in metal transport to the mitochondrial intermembrane space and assembly of complex IV of the mitochondrial respiratory chain (Sacconi et al., 2005 [PubMed 16212937]).[supplied by OMIM, Mar 2008],
<b>matters needing attention</b>	Avoid repeated freezing and thawing!

**Usage suggestions**

This product can be used in immunological reaction related experiments. For more information, please consult technical personnel.

**Products Images**

Immunohistochemistry analysis of paraffin-embedded human colon carcinoma tissue, using COX19 Antibody. The picture on the right is blocked with the synthesized peptide.